



# **BAND HANDBOOK**

## **2025-2026**

# TABLE OF CONTENT

---

Welcome Message .....	01
Membership .....	02
Hierarchy of Leadership .....	05
Ensemble Outline .....	06
Obligations .....	08
Band Boosters Organization .....	11
Bear Card Fundraiser .....	12
Attendance/Grading .....	13
Remind .....	15
Calendar .....	16
Contacts/Social Media .....	19
Handbook Contract .....	20

# WELCOME MESSAGE

---

Dear Band Members and Parents,

Welcome to the "Golden Bear Band"!

We are very proud of our band program here at Robertsdale High School and are glad that you have chosen to be a part of our tradition. Our program includes many different performing ensembles consisting of the Marching Band, Color Guard, Wind Ensemble, Symphonic Band, Concert Band, Jazz Band, Chamber Ensembles, Indoor Percussion, and Winter Guard. Each of these groups are very competitive and have won numerous awards in the Southeast region and nationally. You will not be disappointed in the quality of our program.

Parents, we hope to see you at all of our booster meetings. Our booster organization is integral to the financial success of this organization. Without strong support from our booster organization, we would not be able to function as one of the best music programs in our area.

The Golden Bear Band is fortunate to have outstanding instructors for each section. Your student will receive one-on-one attention in every ensemble. We are pleased to have Mark Foster, our Percussion Instructor, and Marsha Foster and Zoe Buckner, our Guard Instructors, preparing our groups to represent the Golden Bear Band across the country.

We are pleased to welcome you to the "Golden Bear Band".  
Go Bears!

## LEE HUGHES

Director of Bands  
Robertsdale High School  
[lhughes@bcbe.org](mailto:lhughes@bcbe.org)  
Office: 251-957-4154  
Cell: 251-298-7147

## JEFFREY LEPA

Associate Director of Bands  
Robertsdale High School  
[jlepa@bcbe.org](mailto:jlepa@bcbe.org)  
Office: 251-957-4154  
Cell: 251-270-1132

## JESSICA ROE

Associate Director of Bands  
Robertsdale High School  
[jroe@bcbe.org](mailto:jroe@bcbe.org)  
Office: 251-957-4154  
Cell: 850-466-6187

# MISSION STATEMENT

---

- To build a program based on PRIDE, EXCELLENCE, FAMILY, & COMMITMENT.
- To help educate, share, and foster the value of music education within our community.
- To develop all students into model citizens so they may be successful in future endeavors.
- To provide ALL students a first-class music education through meaningful performance.
- To work every day towards becoming the best band program.

# MEMBERSHIP

---

- The Robertsdale Band program is an organization that provides musical experiences for all students of Robertsdale High School.
- All students are welcome to participate in this activity, provided they pass all audition requirements.
- Members are required to participate both semesters. For continued growth as musicians and ensembles, students are **REQUIRED** to be in marching band and a concert band. This is integral to the student and program. Auditions for band placement will take place in the Spring semester and chair placement will take place after school starts for the semester. Also, class scheduling does not allow for schedule changes at the fall/spring semester split.
- Band Member Obligations: All-inclusive except – Band Jackets, concert attire, sticks, mallets, reeds and accessories (see Obligation information for more details)
  - Obligations - \$350.00 per year
  - Marching Band Shoes - \$45.00
  - THIS DOES NOT INCLUDE ADDITIONAL APPAREL! Please see the attached breakdown of additional guard apparel purchases.
  - A \$30 school activity fee is required for each class (per class) and is paid through My School Bucks. It is not part of the fees/obligations mentioned above.
  - Students are encouraged to participate in our fundraisers to help keep obligations low. Fundraisers occur throughout the year, beginning in the summer months.
  - The band program is self-sufficient. We primarily rely on fundraising and obligations to facilitate all expenditures in the band program.

# ENSEMBLES



The Band program provides for all aspects of a well-rounded band program including the “The Golden Bear Marching Band”, Wind Ensemble, Symphonic Band, Concert Band, Percussion Ensemble, Jazz Band, Chamber Ensembles, and Winter Guard.

## AUDITIONS

- Admission to the program requires an audition for all students on their instrument or equipment.
- Instrumental skills shall include scales/rudiments, technical exercises, and sight-reading ability, as well as hand/foot/eye coordination.
- Visual ensemble skills shall include fundamental flag technique, fundamental movement technique, and eye/hand/foot coordination.



## REHEARSALS

- Once accepted, students are required to be in the band class they have been selected for.
  - Students are also required to be in attendance at all scheduled rehearsals and performances.
  - ALL performances are MANDATORY.
  - All members of the marching band will be required to attend a music camp, and band camp. Any student that has an unexcused absence will be dismissed from the program.
- 
- These camps can be a week or more in length.
  - Instructors are hired to give individualized instruction for these camps to facilitate the learning process.
  - After-school rehearsals include Tuesday and Thursday until 5:30 p.m. for the full band– any rehearsal missed due to an unexcused absence can prevent you from performing. Habitual absences will prevent you from performing – regardless if excused or not.
  - Fall performances include all football games, parades, pep rallies, concerts, and other performances scheduled.



# REHEARSALS CONTINUED...

---

- Spring instrumental ensembles include a minimal amount of after school rehearsals.
- The Competitive Percussion Ensemble and Winter Guard rehearse intensively after school.
- Performances include the state concert band assessment (MPA), and the spring concert, as well as, Mardi Gras parades and other concerts.
- Mardi Gras parades are integral in keeping our fees and obligations low.
- Percussion Ensemble, Winter Guard, and Jazz Band performances run from November to May.

# HEALTH & WELL-BEING

---

- All members of the Robertsdale High School Band are responsible for protecting their hearing by using appropriate ear plugs in all rehearsals and performances. Students are highly encouraged to purchase hearing protection to prevent hearing loss.
- All members of the Robertsdale High School Band are expected to be in good physical condition. They understand that this is a physically demanding activity and that proper health must be maintained. Marching Band activities will include physical conditioning and exercise, as it is a PE credit earning activity.
- All members are expected to drink the appropriate amount of water each day and maintain a healthy diet. Students are expected to eat healthy meals before all rehearsals and performances. Students must bring their issued water jug to all rehearsals and performances so that they can stay properly hydrated.
- All members are expected to wear appropriate clothing fit for outdoor activities during rehearsals or performances when a uniform is not mandated.

# PRIVATE LESSONS

---

- Private Lessons are not required but are ultimately the best way to get better on your instrument. Students make incredible progress when they study privately with an instructor.
- If a student is interested in Private Lessons, please see our website for an updated list of local instructors or ask a band director for further information.

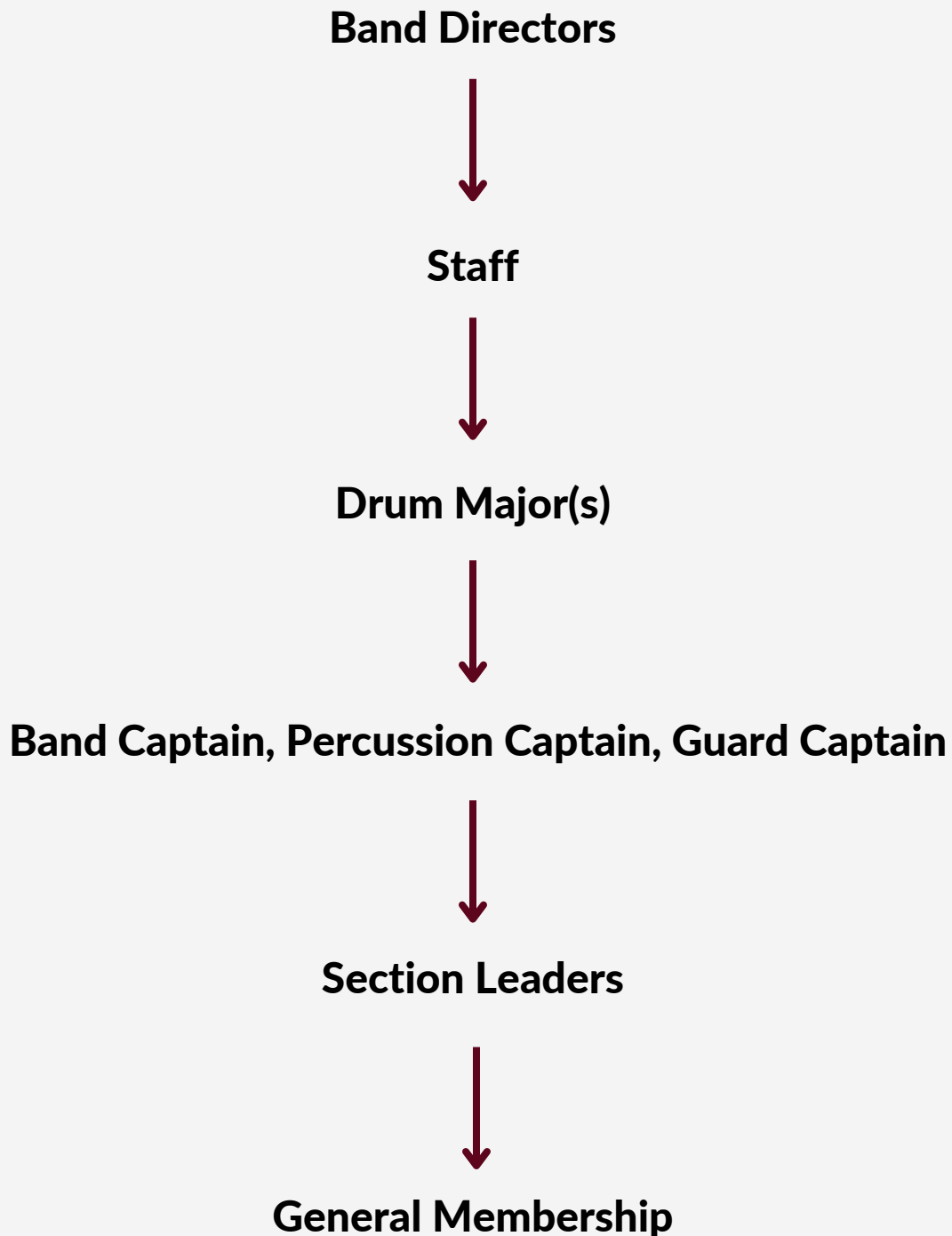
# STUDENT LEADERSHIP

---

- Band Leadership is made up of appointed and audition-based positions. Each student must submit an application form and interview. Drum Majors must audition.
- Appointed officers include:
  - Band Captain
  - Section Leaders
  - Librarians
  - Transportation Coordinator
  - Uniform Captain
  - Drum Major: is an auditioned position and will be responsible for the conducting duties of the marching band, represent the band at competitions, visit other bands, and meet regularly with the other leadership staff to discuss the operations of the band program.

# HIERARCHY OF LEADERSHIP

---



# THE "GOLDEN BEAR"

## MARCHING BAND

---

- The marching band is a 230 plus member organization that performs for all football games, parades, pep-rallies, and up to 4 marching band competitions which includes:
  - Wind instruments (brass/woodwind) that provides the music, both melodically and harmonically, and visual movement
  - Percussion instruments that provide the rhythmic drive and stability
  - Visual ensemble that provides the color and spectacle of the band through equipment use and dance
- The half-time/competitive show is designed to create a musical and visual journey that pertains to a specific emotion, story, or motivic thread.
- All sections of the band are treated as equals, and no specific section is featured for any length of time.
- All members play a specific part or role in the production that is perfected from June to November.
- Marching Band Competitions are held from the end of September through early November and give an assessment of the growth of the program, and award students' hard work and achievement.
- Wind instrumentalists audition for placement in their respective sections by showing their ability to perform scales, show technical mastery, and sight-reading ability to the band directors.
- All percussion students will audition in the Spring semester to be assigned their positions for the Fall.
- All percussion students will audition on rudiments/scales, technical exercises showing proper technique and sight-reading ability to the percussion director and those designated.
- Visual Ensemble students will be auditioned in April and May at an audition camp.
  - All visual ensemble students, new and returning, will be required to audition on flag, and learn fundamental movement techniques.
  - A routine will be taught during this camp and performed on the final day, as well as, showing proper technique in marching skills, and flag skills.
  - Selection of the members will be based on the overall ability of the students and the capability they show at the audition.
  - All members will perform with various pieces of equipment and dance at various times in the half-time production.
  - The visual ensemble will be instructed by the visual ensemble instructor, chosen by the band director, and those designated to assist.



# WIND ENSEMBLE, SYMPHONIC, & CONCERT BAND

- These ensembles are a select group of instrumentalists that are based on auditions from the Spring semester.
- These ensembles perform in concerts from August through May.
- These ensembles perform for our state concert band assessment in the Spring.
- These ensembles are open to all instrumentalists who meet the audition requirements

## PERCUSSION ENSEMBLE

- The percussion ensemble is an auditioned unit of the fall percussion ensemble.
- Auditions are based on reading ability and technical skills.
- This ensemble also forms the percussion sections of the Wind Ensemble, Concert Band, and Symphonic Band. This ensemble will compete as an independent ensemble at local, regional, and national competitions, and performs school and local concerts from August through May.
- The Percussion Ensemble will meet during the fall and spring, during school and after school. They will perform for all scheduled local, regional, and national competitions.
- All Percussion members are also required to participate in Mardi Gras parades and other full band functions requiring a Percussion ensemble.

## WINTER GUARD

- All Guard students will audition for one of our Winter Guard ensembles.
- The Winter Guard is an auditioned unit of the fall visual ensemble.
- This group auditions in November and rehearses after school
- All guard members are also required to participate in Mardi Gras parades and other full band functions that require a visual ensemble.
- The group will participate in various contests on Saturdays starting January and ending in April

## JAZZ BAND

- The jazz band includes students that have an interest in learning the jazz repertoire.
- This ensemble meets during school.
- All instrumental students who are in band are welcomed to participate.
- This ensemble performs for concerts and school activities throughout the year.

## CHAMBER ENSEMBLES

- Volunteer Based Ensemble, Student Led
- Example Ensembles include Saxophone Choir, Woodwind Choir, Woodwind Quintet, Brass Quintet, Brass Choir, etc.

# OBLIGATIONS

---

## 1. FUNDRAISING

- The band program will have general fund fundraisers. All students must participate, regardless if they owe obligations.
- These fundraisers allow our fees and obligations to remain one of the lowest in our activity.

## 2. WINDS

- \$350 – Winds Obligation
  - What does your Winds obligation pay for? – All regular season travel, uniform rental, upkeep and cleaning, basic equipment and facility usage, music, and all instruction.
- Does not include personal items listed below and food items
  - Concert Attire - Pricing will be published in September
  - Band shoes \$45 (for new students or if current students order replacement shoes)
  - Band Jackets and other t-shirts and personal items
  - Reeds and other accessories
  - Extra Gloves- \$5/pair
- All Fees will be assessed through My School Bucks

## 3. COLOR GUARD

- \$350 – Guard Obligation
  - What does your Guard obligation pay for? – All regular season travel, uniform rental, upkeep and cleaning, basic equipment and facility usage, music, and all instruction.
- Extra Guard Apparel/Equipment (REQUIRED, AND NOT COVERED BY FALL OBLIGATIONS)
  - Guard Marching Shoes - \$45.00\*
  - Band Jacket - \$60.00\*
  - Tote Bag - \$45.00\*
  - Gloves - \$30.00 (Optional)\*
- \*All Items are required to participate and can be reused each year if they are in working order\*
- All Fees will be assessed through My School Bucks

# OBLIGATIONS CONTINUED...

---

## 4. WINTER GUARD AND INDOOR PERCUSSION

- \$200 paid or fundraised
- Includes all winter guard and indoor percussion activities
  - What does your Winter Guard Obligation pay for? – All travel, uniform rental, show design, basic equipment, and all instruction.
  - What does your Indoor Percussion Obligation pay for? - All travel, basic equipment usage and upkeep, instruction, supplies, writing, and music.
- A fundraising or payment schedule will be published to those who participate.
- All Fees will be assessed through My School Bucks

## 5. PERCUSSION

- \$350 – Percussion Obligation
  - What does your Percussion Obligation pay for? – All travel, basic equipment usage and upkeep, instruction, supplies, writing, uniform rental, and music.
- Does not include personal items listed below and food items
  - Band Jackets and other t-shirts and personal items
  - Band shoes \$45 (for new students or if current students order replacement shoes)
  - Personal sticks and mallets
  - Concert Attire - Pricing will be published in September
- All Fees will be assessed through My School Bucks

Note: there is a \$30.00 activity fee for all classes that must be paid through My School Bucks for every band class.

# OBLIGATIONS PAYMENT SCHEDULE

---

## WINDS SCHEDULE

May 13 (booster meeting)	\$100.00
***This is required to secure your spot in the show! ***	
June 1	\$100.00
July 1	\$75.00
August 1	\$75.00
Shoes (If needed) August 1	\$45.00

## GUARD SCHEDULE

April 7	\$175.00
***This is required to secure your spot in the show! ***	
May 5	\$175.00
June 1	\$45.00 and \$30.00 (Travel Bag and Gloves)
August 1	\$45.00 (Guard Shoes)
August 1	\$60.00 (Band Jacket)
January 1	\$200 (Winter Guard) Paid or fundraised

## PERCUSSION SCHEDULE

April 22	\$100.00
***This is required to secure your spot in the show! ***	
May 13	\$100.00
June 1	\$75.00
July 1	\$75.00
August 1	\$45.00 (Shoes, if needed)
January 1	\$200 (Indoor Percussion Ensemble) Paid or fundraised

\$30 school fees are paid through My School Bucks.

**\*\*Please make all payments to “My School Bucks”. All fees will be charged to each individual student’s My School Bucks account \*\***

# BAND BOOSTERS ORGANIZATION

---

The Robertsdale High School Band Boosters, is an organization created to assist the band and its staff in the overall operation of the band program. The Band Boosters meet once a month at 6:30 P.M. in the RHS Band Room. The meeting is open to any parent (of a band member) who is interested in helping with the program. The Band Boosters assist with creating fundraising opportunities, getting volunteers/chaperones in place for various rehearsals/performances, creating social activities for the students, and assisting in any other way possible to add to the experience of each band member. Additional information can be found on our website. This organization ensures our fees remain as low as possible.

## CURRENT BOARD MEMBERS

President: Loren Cooley

Vice President: Rachel Martin

Treasurer: Jamie Carder-Haas

Secretary: Valorey Salter

[robertsdalebandboosters@gmail.com](mailto:robertsdalebandboosters@gmail.com)

# MANDATORY FUNDRAISER BEAR CARDS

---

The Golden Bear Band “Bear Card” discount card is to be sold at \$10 each. Each member of the Golden Bear Band will receive ten (10) Bear Card discount cards

The discount cards will be given to each student to offset band obligations.

This mandatory fundraiser is in an effort to offset band obligations and allow the Golden Bear Band to have the lowest obligations in our area.

If a student wants to check out more Bear Cards after they have sold the first ten (10), please see Mr. Hughes, Mrs. Roe, or Mr. Lepa about purchasing a second set.



# ATTENDANCE & GRADING

---

Attendance to ALL performances, after school rehearsals, parades, football games, play-off games, and special events are mandatory and graded.

- Assessments 50% – All Performances, public performances, contests, and special events.
- Out of Class 20% – After school Rehearsals and other extra-curricular assignments
  - Assessed by periodic pass-offs
- In Class 30% – Practicing individual music, parts, work, and routine
  - Assessed by periodic pass-offs
- Midterm/Final 10% – Will be based on either a performance or a written exam

Excessive or multiple absences could lead to the removal of the student from an ensemble or the band program entirely. This will be left up to the ruling of the band directors and administration of Robertsdale High School. The concept of the ensembles in the Golden Bear Band are only successful if there is 100% attendance. The art of music and band is very much a group effort where numerous students come together to create one musical concept or idea (ensemble).

It is the responsibility of the student to inform the directors of an excused absence that could conflict with band. The Golden Bear Band schedule is published months in advance and we do ask that you schedule around the band schedule. Excused/Unexcused absences will be determined by the band directors, administration, and student handbook.

Students are required to attend all after-school rehearsals. The absence from a rehearsal prior to a performance could lead to your removal from that performance. You are required to have attended/checked in to school the day of a trip or off campus performance to be eligible to travel/perform with the Golden Bear Band.

Students who miss performances and/or rehearsals will receive a zero (0). Make-up assignments/projects will be offered to students who have EXCUSED absences for any performances and/or rehearsals that they miss. Those students must turn in/complete the assignment within three (3) school days (taken from the BCBE student handbook).

Students who miss performances and/or rehearsals that are UNEXCUSED will receive a zero (0) with no chance to make up the grade.

**\*\*\* Multiple EXCUSED absences could lead to your removal from an ensemble. \*\*\***

# MAKE-UP ASSIGNMENT

---

As per the County policy, students with an excused absence on the day of a rehearsal or performance may be permitted to submit a makeup assignment. Select an essay prompt from the below list. You are to write a 3 three-page (front and back) handwritten essay addressing your selected prompt. You have three school days from the day of your excused absence to submit this essay to Mr. Hughes, Mr. Lepa, or Mrs. Roe. (Example: If you were absent for three days, your three-day timeline would begin from your last absence.) After those three days have expired, the paper may not be submitted.

## Prompts:

1. What is a leader, and how do you become an influential leader?
2. While not a sport, the band is a team activity. How and why is the individual important for the success of the team?
3. Write about a historical figure who was a great leader. What made him or her so influential?
4. Write about someone in your life who is a great leader. How does he or she inspire you?
5. What is your idea of a good person? How can individuals strive to be good people on a daily basis?

**It is the student's responsibility to keep up with assignments that are due for EXCUSED absences.**



# Sign up for important updates from Mr. Hughes.

Get information for **Robertsdale High School** right on your phone—not on handouts.

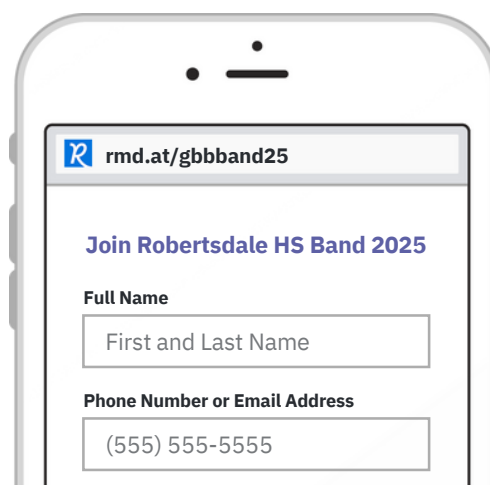
Pick a way to receive messages for **Robertsdale HS Band 2025**:

**A** **If you have a smartphone, get push notifications.**

On your iPhone or Android phone, open your web browser and go to the following link:

[rmd.at/gbbbband25](https://rmd.at/gbbbband25)

Follow the instructions to sign up for Remind. You'll be prompted to download the mobile app.



**B** **If you don't have a smartphone, get text notifications.**

Text the message [@gbbbband25](https://t.me/gbbbband25) to the number **81010**.

If you're having trouble with **81010**, try texting [@gbbbband25](https://t.me/gbbbband25) to **(415) 799-2512**.

\* Standard text message rates apply.



**Don't have a mobile phone?** Go to [rmd.at/gbbbband24](https://rmd.at/gbbbband24) on a desktop computer to sign up for email notifications.

# SUMMER SCHEDULE

## PERCUSSION

### **June Fundamentals Camp**

2nd, 9th, 16th, 23rd

8:00AM – 12:00PM

### **Percussion Camp**

July 14th – 18th

8:00AM – 4:30PM

Lunch 11:30AM – 12:30PM (Lunch Provided)

## GUARD

### **June Guard Camp**

2nd, 9th, 16th, 23rd

9:00AM – 4:00PM

### **Guard Camp**

July 7th – 11th

8:00AM – 12:00PM Full Guard

1:00PM – 4:30PM Weapons Only

## WINDS

### **Fundamentals, Music Camp & Uniform Fittings**

July 14th – 18th

8:30AM – 4:30PM (ALL WINDS PLAYERS)

Lunch 11:30AM – 12:30PM (Lunch Provided)

15 - 3:30PM – Senior Uniform Fitting

16 - 3:30PM – Junior Uniform Fitting

17 - 3:30PM – Sophomore Uniform Fitting

18 - 3:30PM – Freshman Uniform Fitting

# SUMMER SCHEDULE CONTINUED...

---

## FULL BAND CAMP

---

WINDS, GUARD, & PERCUSSION (EVERYONE)

**July 21st – July 25th**

8:00AM – 11:30AM

Lunch (provided)

1:00PM – 4:30PM

Dinner (provided)

6:00PM – 8:30PM

July 29th and 31st 8:00AM – 4:30PM

August 5th and 7th 3:30PM – 6:00PM

## AFTER-SCHOOL PRACTICES

---

August 11th First Day of Classes

-After School Practices Begin August 12th (3:00PM – 5:30PM every Tuesday and Thursday) Until November 1.

**\*\*\*All dates posted above are mandatory and required. \*\*\***

**Please fill out the online Intent and Medical form located at:**

<https://www.robertsdalehighschoolband.com>

# 2025-2026 CALENDAR

---

## August

8 - Community Pep Rally JD Sellars Stadium  
11 - First Day of School  
12 - After School Practice 3:00 – 5:30  
14 - After School Practice 3:00 – 5:30  
19 - After School Practice 3:00 – 5:30  
21 - After School Practice 3:00 – 5:30  
22 - Home VS LeFlore  
26 - After School Practice 3:00 – 5:30  
28 - After School Practice 3:00 – 5:30  
29 - Away @ Elberta

## September

2 - After School Practice 3:00 – 5:30  
4 - After School Practice 3:00 – 5:30  
5 - Away @ Foley  
9 - After School Practice 3:00 – 5:30  
11 - After School Practice 3:00 – 5:30  
12 - Home VS MGM  
13 - Play-a-thon 8am - 5pm  
16 - After School Practice 3:00 – 5:30  
18 - After School Practice 3:00 – 5:30  
19 - Away @ Fairhope  
23 - After School Practice 3:00 – 5:30  
25 - After School Practice (Possible Homecoming Parade)  
26 - Home VS Orange Beach Homecoming  
29 - After School Practice 3:00 - 5:30  
30 - Baldwin County Band Jamboree 6:00 PM

## October

2 - After School Practice 3:00 – 5:30  
3 - Home VS Baker  
4 - Foley, AL Marching Contest  
7 - After School Practice 3:00 - 5:30 (Band Jamboree Rain Make Up Date)  
9 - After School Practice 3:00 - 5:30  
10 - Home VS Davidson Middle School Night  
11 - Possible Marching Band Contest  
14 - After School Practice 3:00 – 5:30  
16 - After School Practice 3:00 – 5:30  
17 - Away @ Alma Bryant  
18 - Possible Marching Band Contest  
21 - After School Practice 3:00– 5:30  
23 - After School Practice 3:00– 5:30  
24 - Home VS Daphne (Senior Night)  
25 - Daphne, AL Marching Band Contest  
28 - After School Practice 3:00 – 5:30  
30 - After School Practice 3:00 – 5:30

**\*Varsity and JV Winter Guards- After school practices 2 days/week November – April; dates TBA**

**\*\*Indoor Percussion - After school practices 2 days/week November – April; dates TBA**

## November

3- Winter Guard Auditions Begin  
18- County Honor Band Auditions (Mandatory for Wind Ensemble)

## December

### TBA- RHS Christmas Concert

5 - Silverhill Christmas Parade  
6 - Robertsedale Christmas Parade  
12 - Loxley Christmas Parade

## January

6 - First Day of 2nd Semester  
15-16 BCBE Honor Band  
31 All-State Auditions @University of Mobile (Tentative)  
\*Mandatory after school rehearsals for MPA TBA  
\*\*Indoor Guard and Percussion should have Saturdays from January- April blocked for potential contests. Schedule will be determined by October.\*\*

## February

14 - Loxley Mardi Gras Parade  
16 - 17 Mardi Gras Holiday  
Pre MPA Concert TBA  
\*Mandatory After School Rehearsals for MPA TBA  
These will be published by November\*  
\*\* We will host another indoor contest - Dates and Information to be published\*\*

## March

2-6 MPA (Tentative)  
\*Mandatory After School Rehearsals TBA\*  
19-20 District Honor Band (Tentative)  
GCGPC Championships TBA

## April

9-12 Universal Studios Spring Trip  
13-17 Spring Break  
15-18 All-State Honor Band Mobile, AL  
TBA Guard Auditions 2025/26  
TBA Percussion Auditions 2025/26  
TBA Band Banquet  
Concerts TBA

## May

### TBA - Spring Concert

2 - Solo and Ensemble

**\*All performances and rehearsals are required and graded. \***

**\*\*All dates/times are subject to change with the band directors' discretion with proper notice to the students and parents. Please contact Mr. Hughes at [lhughes@bcbe.org](mailto:lhughes@bcbe.org), Mr. Lepa at [jlepa@bcbe.org](mailto:jlepa@bcbe.org) or Ms. Roe at [jroe@bcbe.org](mailto:jroe@bcbe.org) for additional information**



# IMPORTANT CONTACTS

---



LEE HUGHES  
Band Director  
Office: 251-947-4154  
Cell: 251-298-7147  
[lhughes@bcbe.org](mailto:lhughes@bcbe.org)



JEFFREY LEPA  
Band Director  
Office: 251-947-4154  
Cell: 251-270-1132  
[jlepa@bcbe.org](mailto:jlepa@bcbe.org)



JESSICA ROE  
Band Director  
Office: 251-947-4154  
Cell: 850-466-6187  
[jroe@bcbe.org](mailto:jroe@bcbe.org)

# SOCIAL MEDIA

---





## HANDBOOK CONTRACT

### To Whom It May Concern:

I understand that my child will be a participant in the Golden Bear Band for the 2025-2026 school year. I hereby grant permission for my child to attend all events in which the band will participate, including but not limited to out-of-town football games and field trips. I understand that my child will be transported to these events in some manner, i.e. school buses, charter buses, or private transportation. If private vehicles are used, they will be operated by individuals who will be advised to operate the vehicles with the care of a prudent driver in compliance with Alabama Rules of the Road. I further understand and agree that my child will be considered a guest rider under the laws of Alabama and that the school officials or chaperones will not be liable for any injuries to anyone or for the acts of others.

I understand that each trip will be chaperoned by Robertsdale High School Band parents and/or other adults. In the event of an accident I grant the chaperones the authority to give a physician permission to administer medical aid to my child. Any special health needs and/or allergies the teacher should be aware of are listed below:

I understand that I shall contact the Director of Bands in writing should any of the above circumstances change.

Dated, this the \_\_\_\_\_ day of \_\_\_\_\_, 2025

Student Name: \_\_\_\_\_

Birthdate: \_\_\_\_\_

Parent/ Guardian Name: \_\_\_\_\_

Day Phone: \_\_\_\_\_ Evening Phone: \_\_\_\_\_

Parent/Guardian Email: \_\_\_\_\_

Student Email: \_\_\_\_\_

Insurance Co. Name: \_\_\_\_\_

Group Number: \_\_\_\_\_ Contract Number: \_\_\_\_\_

Person to Contact in the Event of an Emergency, if Above Cannot be Reached:

Name: \_\_\_\_\_ Phone: \_\_\_\_\_

Signature of Parent/Guardian:

\_\_\_\_\_