

PRIDE - EXCELLENCE - FAMILY - COMMITMENT



2022-2023 BAND HANDBOOK

Band Directors

Lee Hughes
Bryant Ramey
Jeffrey Lepa

Table of Contents

Membership

Pages 3 - 6

Hierarchy of Leadership

Page 7

Ensemble Outline

Pages 8-9

Obligations Outline

Pages 10-12

Band Booster Organization

Page 13

Bear Card Fundraiser

Page 14

Attendance and Grading

Pages 15-16

Band Social Media/Remind

Page 17

Band Calendar

Page 18-20

Band Handbook Contract

*****To be signed and returned*****

Page 21

Robertsdale High School

Golden Bear Band
1 Golden Bear Dr.
Robertsdale, AL 36567

Dear Band Member and Band Parent,

Welcome to the **"Golden Bear Band"**!

We are very proud of our band program here at Robertsdale High School and are glad that you have chosen to be a part of our tradition. Our program includes many different performing ensembles consisting of the Marching Band, Color Guard, Wind Ensemble, Symphonic Band, Concert Band, Jazz Band, Chamber Ensembles, Indoor Percussion, and Winter Guard. Each of these groups are very competitive and have won numerous awards in the Southeast region and nationally. You will not be disappointed in the quality of our program.

Parents, we hope to see you at all of our booster meetings. Our booster organization is integral to the financial success of this organization. Without strong support from our booster organization, we would not be able to function as one of the best music programs in our area.

The Golden Bear Band is fortunate to have outstanding instructors for each section. Your student will receive one-on-one attention in every ensemble. We are pleased to have Mark Foster, our Percussion Instructor, and Marsha Foster and Blair de Graaf, our Guard Instructors, preparing our groups to represent the Golden Bear Band across the country.

We are pleased to welcome you to the **"Golden Bear Band"**.

Go Bears!

Lee Hughes
Director of Bands
Robertsdale High School
lhughes@bcbe.org
Office: 251-957-4154
Cell: 251-298-7147

Bryant Ramey
Associate Director of Bands
Robertsdale High School
bramey@bcbe.org
Office: 251-957-4154
Cell: 251-298-9780

Jeffrey Lepa
Associate Director of Bands
Robertsdale High School
jlepa@bcbe.org
Office: 251-957-4154
Cell: 251-270-1132

Robertsdale High School Band

Mission Statement

- To build a program based on PRIDE, EXCELLENCE, FAMILY, & COMMITMENT.
- To help educate, share, and foster the value of music education within our community.
- To develop all students into model citizens so they may be successful in future endeavors.
- To provide ALL students a first-class music education through meaningful performance.
- To work every day towards becoming the best band program.

Membership:

- The Robertsdale Band program is an organization that provides musical experiences for all students of Robertsdale High School.
- All students are welcome to participate in this activity, provided they pass all audition requirements.
- ***Members are required to participate both semesters.*** For continued growth as musicians and ensembles, students are ***REQUIRED*** to be in marching band and a concert band. This is integral to the student and program. Auditions for band will take place in the Spring semester and chair placement will take place after school starts for the semester. Also, class scheduling does not allow for schedule changes at the fall/spring semester split.
- Band Member Obligations: All-inclusive ***except*** – Band Jackets, concert attire, sticks, mallets, reeds and accessories (see Obligation information for more details)
 - ***Instrumental Obligations - \$240.00 per year***
 - ***Percussion Obligations - \$390.00 Per Year***
 - ***Instrument Rental/Checkout Obligation - \$50.00***
 - ***Marching Band Shoes - \$35.00***
 - ***Guard Obligations - up to \$445***
 - ***THIS DOES NOT INCLUDE ADDITIONAL APPAREL! Please see the attached breakdown of additional guard apparel purchases.***
 - *A \$30 school activity fee is required for each class (per class) and is paid directly to the **front office** and is not part of the fees/obligations mentioned above.*
 - *Students are encouraged to participate in our monthly fundraisers to help keep our obligations low. Fundraisers occur throughout the year, beginning in the summer months.*
 - *The band program is self-sufficient. We primarily rely on fundraising and obligations to facilitate all expenditures in the band program.*

Ensembles:

- The Band program provides for all aspects of a well-rounded band program including the “The Golden Bear Marching Band”, Wind Ensemble, Symphonic Band, Concert Band, Percussion Ensemble, Jazz Band, Chamber Ensembles, and Winter Guard.

Auditions (overview):

- Admission to the program requires an audition for all students on their instrument or equipment.
- Instrumental skills shall include scales/rudiments, technical exercises, and sight-reading ability, as well as hand/foot/eye coordination.
- Visual ensemble skills shall include fundamental flag technique, fundamental movement technique, and eye/hand/foot coordination.

Rehearsals/Performances (overview):

- Once accepted, students are required to be in the band class they have been selected for.
- Students are also required to be in attendance at all scheduled rehearsals and performances.
- ***ALL performances are MANDATORY.***
- All members of the marching band will be ***required*** to attend a music camp, and band camp. Any student that has an ***unexcused absence*** will be dismissed from the program.
- These camps can be a week or more in length.
- Instructors are hired to give individualized instruction for these camps to facilitate the learning process.
- After-school rehearsals include Tuesday and Thursday until 5:30 p.m. for the full band– any rehearsal missed due to an unexcused absence can prevent you from performing. Habitual absences will prevent you from performing – regardless if excused or not.
- Fall performances include all football games, parades, pep rallies, concerts, and other performances scheduled.
- Spring instrumental ensembles include a minimal amount of after school rehearsals.
- The Competitive Percussion Ensemble and Winter Guard rehearse intensively after school.
- Performances include the state concert band assessment (MPA), and the spring concert, as well as, Mardi Gras parades and other concerts.
- Mardi Gras parades are integral in keeping our fees and obligations low.
- Percussion Ensemble, Winter Guard, and Jazz Band performances run from November to May.

Health/Well-Being

- All members of the Robertsdale High School Band are responsible for protecting their hearing by using appropriate ear plugs in all rehearsals and performances. Students are highly encouraged to purchase hearing protection to prevent hearing loss.
- All members of the Robertsdale High School Band are expected to be in good physical condition. They understand that this is a physically demanding activity and that proper health must be maintained. Marching Band activities will include physical conditioning and exercise, as it is a PE credit earning activity.
- All members are expected to drink the appropriate amount of water each day and maintain a healthy diet. Students are expected to eat healthy meals before all rehearsals and performances. Student must bring their issued water jug to all rehearsals and performances so that they can stay properly hydrated.
- All members are expected to wear appropriate clothing fit for outdoor activities during rehearsals or performances when a uniform is not mandated.

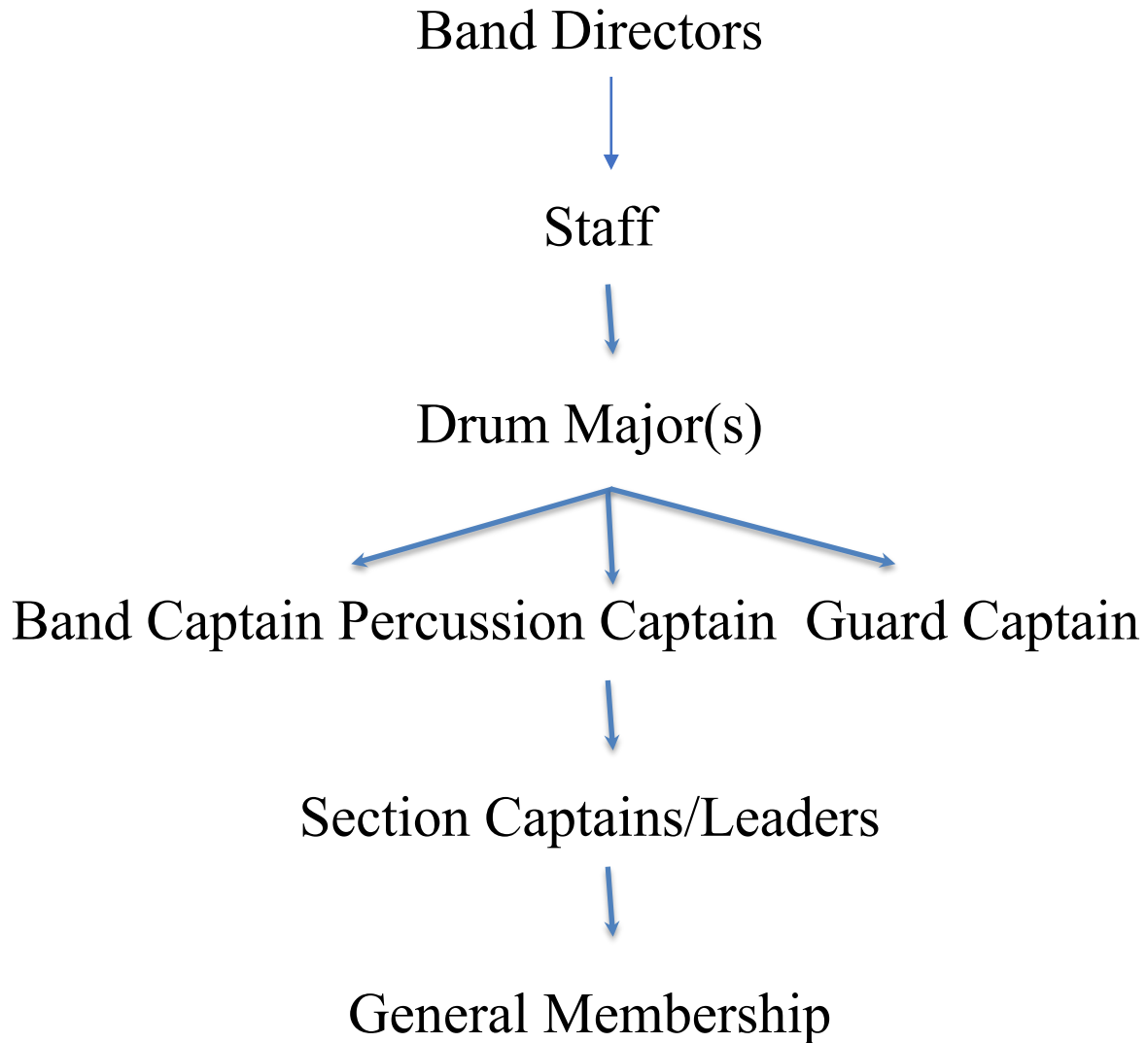
Private Lessons

- Private Lessons are not required but are ultimately the best way to get better on your instrument. Students make incredible progress when they study privately with an instructor.
- If a student is interested in Private Lessons, please see our website for a compiled list of local instructors or ask Mr. Hughes for further information.

Student Leadership

- Band Leadership is made up of appointed and audition-based positions. Each student must submit an application form and interview. Drum Majors must audition.
- Appointed officers include:
 - Band Captain
 - Section Leaders
 - Librarians
 - Transportation Coordinator
 - Uniform Captain
- Drum Major: is an auditioned position and will be responsible for the conducting duties of the marching band, represent the band at competitions, visit other bands, and meet regularly with the other leadership staff to discuss the operations of the band program.

Hierarchy of Leadership



Ensemble Outline

"The Golden Bear Marching Band"

- The marching band is a 200 plus member organization that performs for all football games, parades, pep-rallies, and up to four marching band competitions which includes:
 - wind instruments (brass/woodwind) that provides the music, both melodically and harmonically, and visual movement
 - percussion instruments that provide the rhythmic drive and stability
 - visual ensemble that provides the color and spectacle of the band through equipment use and dance
- The half-time/competitive show is designed to create a musical and visual journey that pertains to a specific emotion, story, or motivic thread.
- All sections of the band are treated as equals and no specific section is featured for any length of time.
- All members play a specific part or role in the production that is perfected from June to November.
- Marching Band Competitions are held from the end of September through early November and give an assessment of the growth of the program, and award students' hard work and achievement.
- Wind instrumentalists audition for placement in their respective sections by showing their ability to perform scales, show technical mastery, and sight-reading ability to the band director.
- All percussion students will audition in the Spring semester to be assigned their positions for the Fall.
- All percussion students will audition on rudiments/scales, technical exercises show proper technique and sight-reading ability to the percussion director and those designated.
- Visual Ensemble students will be auditioned in April and May at an audition camp.
 - All visual ensemble students, new and returning, will be required to audition on flag, and learn fundamental movement techniques.
 - A routine will be taught during this camp and performed on the final day, as well as, showing proper technique in marching skills, flag skills.
 - Selection of the members will be based on the overall ability of the students and the capability they show at the audition.
 - All members will perform with various pieces of equipment, and dance at various times in the half-time production.
 - The visual ensemble will be instructed by the visual ensemble instructor, chosen by the band director and those designated to assist.

Wind Ensemble, Symphonic Band, and Concert Band

- These ensembles are a select group of instrumentalists that are based on auditions from the Spring semester.
- These ensembles perform for state concert band assessment and other concerts from August through May.
- These ensembles perform for our state concert band assessment and other concerts.
- These ensembles are open to all instrumentalists who meet the audition requirements.

Ensemble Outline Continued

Percussion Ensemble

- The percussion ensemble is an auditioned unit of the fall percussion ensemble.
- Auditions are based on reading ability, and technical skills.
- This ensemble also forms the percussion sections of the Wind Ensemble, Concert Band, and Symphonic Band, competes as an independent ensemble at local, regional, and national competitions, and performs school and local concerts from August through May.
- The Percussion Ensemble will meet during the spring, during school and after school. They will perform for all scheduled local, regional, and national competitions.
- All Percussion members are also required to participate in Mardi Gras parades and other full band functions requiring a Percussion ensemble.

Winter Guard

- All Guard students will participate in one of our Winter Guard ensembles.
- The Winter Guard is an auditioned unit of the fall visual ensemble.
- This group auditions in November and rehearses after school
- All guard members are also required to participate in Mardi Gras parades and other full band functions that require a visual ensemble.
- The group will participate in various contests on Saturdays starting January and ending in April

Jazz Band

- The jazz band includes students that have an interest in learning the jazz repertoire.
- This ensemble meets during school.
- All instrumental students who are in band are welcomed to participate.
- This ensemble performs for concerts and school activities throughout the year.

Chamber Ensembles

- Volunteer - Based Ensemble
- Student - Led
- Example Ensembles include Saxophone Choir, Woodwind Choir, Woodwind Quintet, Brass Quintet, Brass Choir, etc.

Robertsdale High School Band Obligations 2022-2023

1. Fundraising

- General fund fundraising
 - The band program will have general fund fundraisers. All students must participate, regardless if they owe obligations.
 - These fundraisers allow our fees and obligations to remain one of the lowest in our activity.

2. Winds

- \$240 - Winds Obligation
 - What does your Winds obligation pay for? - All regular season travel, uniform rental, upkeep and cleaning, basic equipment and facility usage, music, and all instruction.
- **Does not include personal items listed below and food items**
 - Tuxedo and concert dress for concert season (for new students)
 - Pricing will be published in September
 - Band shoes \$35 (for new students **or** if current students order replacement shoes)
 - Reeds, and other accessories
 - Extra Gloves- \$5/pair
 - Instrument Rentals \$25 per semester
- (Note: there is a \$30.00 activity fee that must be paid in the main office for every band activity enrolled - This is not part of the \$240.00 band obligation.)

3. Fall Guard Obligations

- \$175 - Guard Obligation
 - What does your Guard obligation pay for? - All regular season travel, uniform rental, upkeep and cleaning, basic equipment and facility usage, music, and all instruction
- \$125 Uniform Rental
- Extra Guard Apparel/Equipment (**REQUIRED, AND NOT COVERED BY FALL OBLIGATIONS**)
 1. Guard Marching Shoes - \$35.00*
 2. Band Jacket - \$50.00*
 3. Tote Bag - \$60.00*
 4. Gloves - \$25.00 (Optional)*

All Items are required to participate and can be reused each year if they are in working order

4. Winter Guard Obligation – TBD based on fundraising

(Guard members in the spring semester that are selected for this unit)

- Includes all winter guard activities
 - What does your Winter Guard Obligation pay for? – All travel, show design, basic equipment, and all instruction.
- A fundraising or payment schedule will be published to those who participate.

5. Percussion Obligation

- \$390 – Percussion Obligation
 - What does your Percussion Obligation pay for? – All travel, basic equipment usage and upkeep, instruction, supplies, writing, band shirt, and music.
- Does not include personal items listed below and food items
 - Band Jackets
 - Other t-shirts and personal items
 - Personal sticks and mallets
 - Concert Attire
 - Fall or Spring Trip costs – TBA
- Must be paid by December 1

Note: there is a \$30.00 activity fee for all classes that must be paid in the main office for every band class.

All regular band obligations must be paid by November 1.

Robertsdale High School Band Winds Obligation Pay Schedule

May 10 (booster meeting) \$100.00

***This is required to secure your spot in the show! ***

June 1 \$50.00

July 1 \$50.00

August 1 \$40.00

Shoes (If needed) August 1 \$35.00

Instrument Rental Obligations

August (Fall Semester Fee) \$25.00

January (Spring Semester Fee) \$25.00

Robertsdale High School Band Guard Obligation Pay Schedule

May 2 \$125.00 (Fall Uniform Rental)

***This is required to secure your spot in the show! ***

May 12 \$175.00 (Fall Guard Obligation)

June 1 \$60.00 (Tote Bag and Gloves)

August 1 \$35.00 (Guard Shoes)

September 1 \$50.00 (Band Jacket)

Robertsdale High School Band Percussion Obligation Pay Schedule

April 26 \$110.00

***This is required to secure your spot in the show! ***

June 1 \$70.00

July 1 \$70.00

August 1 \$70.00

Shoes (If needed) August 1 \$35.00

November 1 \$70.00

All balances are due by November 1, 2022. Make all checks payable to the Robertsdale High School Band. \$30 school fees are paid to the front office.

****Checks, Cashier's Checks, Money Orders, and Cash will be accepted****

*****Please make all checks and/or money orders payable to "RHS Band." Checks must include a phone number and physical address (Not a PO Box). *****

******Any positive balance from a previous year or ensemble will roll over into the following year or ensemble.***

Robertsdale High School Band Boosters

The Robertsdale High School Band Boosters, is an organization created to assist the band and its staff in the overall operation of the band program. The Band Boosters meet once a month at 6:30 P.M. in the RHS Band Room. The meeting is open to any parent (of a band member) who is interested in helping with the program.

The Band Boosters assist with creating fundraising opportunities, getting volunteers/chaperones in place for various rehearsals/performances, creating social activities for the students, and assisting in any other way possible to add to the experience of each band member. Additional information can be found on our website.

This organization ensures our fees remain as low as possible.

Current Board Members

President: Johnna Matias

Vice President: Rachel Martin

Treasurer: Jamie Carder

Secretary: Marie Williams

Consultants: Katrina and Casey Patterson

Mandatory Bear Card Fundraiser

The Golden Bear Band "Bear Card" discount card is to be sold at \$10 each. Each member of the Golden Bear Band will be required to sell ten (10) Bear Card discount cards, or make a payment that is the equal amount of the ten (10) discount cards. The payment would be in the amount of \$100.

The discount cards will be checked out to each student and they are responsible for the cards unless the student decides to pay the \$100 in replacement of selling them. If all or any of the cards that are checked out to a student are lost, then the student will have to pay the difference of the lost or missing cards.

This mandatory fundraiser is in an effort to not raise band obligations and allow the Golden Bear Band to have the lowest obligations in our area.

If a student wants to check out more Bear Cards after they have sold the first ten (10), please see Mr. Hughes, Mr. Ramey, or Mr. Lepa.

All Money/Cards will be due by November 1, 2022.

*****If a student does not sell ten (10) bear cards or chooses not to participate in the fundraiser, an obligation of \$100 will be applied to their account. *****

Robertsdale High School Band Make Up Assignment

As per the County policy, students with an excused absence on the day of a rehearsal or performance may be permitted to submit a makeup assignment. Select an essay prompt from the below list. You are to write a 3 three-page (front and back) ***handwritten*** essay addressing your selected prompt. You have ***three*** school days from the day of your excused absence to submit this essay to Mr. Hughes or Mr. Ramey. (Example: If you were absent for three days, your three-day timeline would begin from your last absence.) After those three days have expired, the paper may not be submitted.

Prompts:

- 1.What is a leader, and how do you obtain being an influential leader?
- 2.While not a sport, the band is a team activity. How and why is the individual important for the success of the team?
- 3.Write about a historical figure who was a great leader. What made him or her so influential?
- 4.Write about someone in your life who is a great leader. How does he or she inspire you?
- 5.What is your idea of a good person? How can individuals strive to be good people on a daily basis?

It is the student's responsibility to keep up with assignments that are due for EXCUSED absences.

Attendance / Grading

Attendance

Attendance to ALL performances, after school rehearsals, parades, football games, play-off games, and special events are mandatory and graded.

Grading

- Assessments 50% – All Performances, public performances, contests, and special events.
- Out of Class 30% – Practicing individual music, parts, work, and routines
 - Assessed by periodic pass-offs
- In Class 20% – During and after school practices
- Midterm/Final 5% – Will be based on either a performance or a written exam

Excessive or multiple absences could lead to the removal of the student from an ensemble or the band program entirely. This will be left up to the ruling of the band directors and administration of Robertsdale High School. The concept of the ensembles in the Golden Bear Band are only successful if there is 100% attendance. The art of music and band is very much a group effort where numerous students come together to create one musical concept or idea (ensemble).

It is the responsibility of the student to inform the directors of an excused absence that could conflict with band. The Golden Bear Band schedule is published months in advance and we do ask that you schedule around the band schedule. Excused/Unexcused absences will be determined by the band directors, administration, and student handbook.

Students are required to attend all after-school rehearsals. The absence from a rehearsal prior to a performance could lead to your removal from that performance. You are required to have attended/checked in to school the day of a trip or off campus performance to be eligible to travel/perform with the Golden Bear Band.

Students who miss performances and/or rehearsals will receive a zero (0). Make-up assignments/projects will be offered to students who have EXCUSED absences for any performances and/or rehearsals that they miss. Those students must turn in/complete the assignment within three (3) school days (taken from the BCBE student handbook). Students who miss performances and/or rehearsals that are UNEXCUSED will receive a zero (0) with no chance to make up the grade.

*** Multiple EXCUSED absences could lead to your removal from an ensemble. ***

GBB Remind

Sign up for important updates from Mr. Hughes.

Get information for **Robertsdale High School** right on your phone—not on handouts.

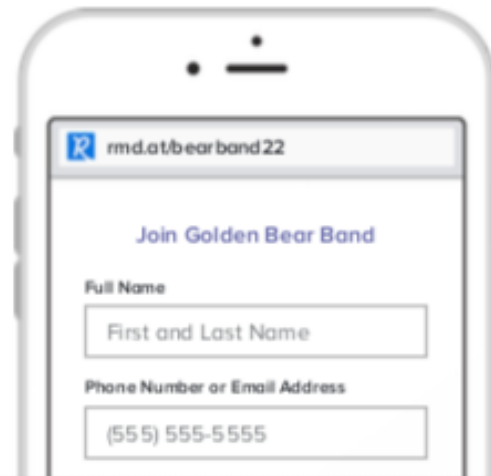
Pick a way to receive messages for **Golden Bear Band**:

A If you have a smartphone, get push notifications.

On your iPhone or Android phone, open your web browser and go to the following link:

rmd.at/bearband22

Follow the instructions to sign up for Remind. You'll be prompted to download the mobile app.



B If you don't have a smartphone, get text notifications.

Text the message [@bearband22](#) to the number **81010**.

If you're having trouble with **81010**, try texting [@bearband22](#) to **(901) 466-8785**.

* Standard text message rates apply.



2022-2023 Golden Bear Band Calendar

August

10 - First day of classes

- 11 - After School Practice 3:00 – 5:30
- 16 - After School Practice 3:00 – 5:30
- 18 - After School Practice 3:00 – 5:30
- 23 - After School Practice 3:00 – 5:30
- 25 - After School Practice 3:00 – 5:30
- 26 - Away @ Theodore**
- 30 - After School Practice 3:00 – 5:30

September

- 1 - After School Practice 3:00 – 5:30
- 2 - Home VS Blount**
- 6 - After School Practice 3:00 – 5:30
- 8 - After School Practice 3:00 – 5:30
- 9 - Away @ McGill-Toolen**
- 13 - After School Practice 3:00 – 5:30
- 15 - After School Practice 3:00 – 5:30
- 16 - Home VS Saraland**
- 20 - After School Practice 3:00 – 5:30
- 22 - After School Practice 3:00 – 5:30
- 23 - Away @ Alma Bryant**
- 27 - Baldwin County Band Jamboree 6:00 P.M.**
- 29 - After School Practice 3:00 – 5:30
- 30 - Away @ Murphy**

October

- 1 - Possible Contest TBA**
- 4 - After School Practice 3:00 – 5:30
- 6 - After School Practice 3:00 – 5:30
- 7-10 BCBE Fall Break
- 7 - Home VS St. Paul's**
- 8 - Possible Contest TBA**
- 11 - After School Practice 3:00 – 5:30
- 13 - After School Practice 3:00 – 5:30
- 14 - Home VS Spanish Fort (HOMECOMING)**
- 15 - Possible Contest TBA**
- 18 - After School Practice 3:00 – 5:30
- 20 - After School Practice 3:00 – 5:30
- 21 - Home VS MGM (SENIOR NIGHT)**
- 22 - Possible Contest TBA**
- 25 - After School Practice 3:00 – 5:30
- 27 - After School Practice 3:00 – 5:30
- 28 - Away @ Baldwin County HS**
- 29 - Possible Contest TBA**

November

- 4 - First Round Play Offs**
- 15- County Honor Band Auditions**

December

- 3 - Robertsdale Christmas Parade**
- 9 - Silverhill Christmas Parade**
- TBD - Loxley Christmas Parade**

January

- 4 - First Day of 2nd Semester
- 12-13 – BCBE Honor Band**
- 28 – All-State Auditions (Saraland HS)**
- Guard and percussion will compete in contests on Saturdays in January
- *Mandatory after school rehearsals for MPA TBA
- These will be published by November

February

- 20-24- Mardi Gras Holiday**
- Guard and percussion will compete in contests on Saturdays in February
- *Mandatory After School Rehearsals TBA
- **We will march no more than three (3) Mardi Gras Parades TBA
- ** We will host another indoor contest – Tentatively February 11, 18, or 25
- *Mandatory after school rehearsals for MPA TBA
- These will be published by November

March

- Guard and percussion will compete in contests on Saturdays in March
- *Mandatory After School Rehearsals TBA
- 6-10– Music Performance Assessment (Baker HS)**
- We will only participate at one day of the assessment which is TBA
- 23-24 – District Honor Band
- 27-31- Spring Break
- Guard and Percussion may have practices over Spring Break based on when GCGPC Championships are.

April

- 1 – GCGPC Championships**
- TBA Guard Auditions 2023/24
- TBA Percussion Auditions 2023/24
- TBA – Solo and Ensemble @Spanish Ft Middle

May

- TBA – Solo and Ensemble @Spanish Ft Middle
- TBA– Graduation – Wind Ensemble will perform
- TBA- **Mandatory after school practice till 5:30**
- **Required for ALL winds and percussion**
- TBA- **Spring Concert**

*All performances and rehearsals are required and graded. *

All dates/times are subject to change with the band directors' discretion with proper notice to the students and parents. Excessive absences could/will lead to your removal from an ensemble

Please contact Mr. Hughes at lhughes@bcbe.org or Mr. Ramey at bramey@bcbe.org for additional information.

Robertsdale High School Golden Bear Band Summer

Percussion Camp (ALL PERCUSSIONISTS)

Fundamentals Camp: June 7th, 14th, 21st, 28th

Snares - 9:00am – 10:30am

Tenors - 10:30am – 12:00am

Basses - 1:00pm – 2:30pm

Front Ensemble - 2:30pm – 4:00pm

Percussion Camp: July 11th – 15th EVERYONE

- 8:00am – 12:00 pm

- 1:00pm – 5:00 pm

Guard Camp (ALL GUARD MEMBERS)

Fundamentals Camp: June 7th, 14th, 21st, 28th

Flags: 9:00am-1:00pm Full Guard

Weapon Line: 2:00pm-4:00pm

Guard Camp: July 11th – 15th EVERYONE at Robertsdale Elementary

- 8:00am – 12:00 pm

- 1:00pm – 5:00 pm

Winds Fundamentals, Music Camp, and Uniform Fittings (ALL WINDS)

July 18th – 22nd

- 8:00am – 4:30pm ALL WINDS PLAYERS

- Lunch 11:30am – 12:30pm

19 - 3:30pm – Senior Uniform Fitting

20 - 3:30pm – Junior Uniform Fitting

21 - 3:30pm – Sophomore Uniform Fitting

22 - 3:30pm – Freshman Uniform Fitting

GOLDEN BEAR BAND SUMMER CAMP CONTINUED

FULL BAND CAMP (Winds, Percussion, and Guard)

July 25th – July 29th

- 8:00am – 11:30am
 - o <Lunch break>
- 1:00pm – 4:30pm
 - o <Dinner break>
- 6:00pm – 8:30pm

August 2nd, and 4th

- 3:30pm – 8:30pm

August 10th First Day of Classes

- After School Practice Begins (3:00pm – 5:30pm every Tuesday and Thursday)

****All dates posted above are mandatory and required. ****

Please fill out the attached forms, as well as the online Intent and Medical form located at:

<https://www.robertsdalehighschoolband.com>



Parent, Student Agreement Form- Golden Bear Band Program 2022-2023

To Whom It May Concern:

I understand that my child _____, will be a participant in the Golden Bear Band for the 2022-2023 school year. I hereby grant permission for my child to attend all events in which the band will participate, including but not limited to out-of-town football games and field trips. I understand that my child will be transported to these events in some manner, i.e. school buses, charter buses, or private transportation.

If private vehicles are used, they will be operated by individuals who will be advised to operate the vehicles with the care of a prudent driver in compliance with Alabama Rules of the Road. I further understand and agree that my child will be considered a guest rider under the laws of Alabama and that the school officials or chaperones will not be liable for any injuries to anyone or for the acts of others.

I understand that each trip will be chaperoned by Robertsdale High School Band parents and/or other adults. In the event of an accident I grant the chaperones the authority to give a physician permission to administer medical aid to my child. Any special health needs and/or allergies the teacher should be aware of are listed below:

I understand that I shall contact the Director of Bands in writing should any of the above circumstances change.

Dated, this the _____ day of _____, 20____.

Student Name: _____

Birthdate: _____

Parent/ Guardian Name: _____

Day Phone: _____ Evening Phone: _____

Parent/Guardian Email: _____

Student Email: _____

Insurance Co. Name: _____

Group Number: _____ Contract Number: _____

Person to Contact in the Event of an Emergency, if Above Cannot be Reached:

Name: _____ Phone: _____

Signature of Parent/Guardian